

## InGaAs PIN PD MODULES

## PD-1320

InGaAs PIN PHOTODIODE WITH 62.5/125  $\mu\text{m}$  MULTI-MODE PIGTAIL

### FEATURES

- ✧ High responsivity for dual windows at 1310 nm and 1550 nm
- ✧ Low dark current
- ✧ Quick pulse response
- ✧ Coaxial Module with 62.5/125  $\mu\text{m}$  Multi-Mode Fiber (PD-1320)

### APPLICATION

SDH, ATM, LAN

### DESCRIPTION

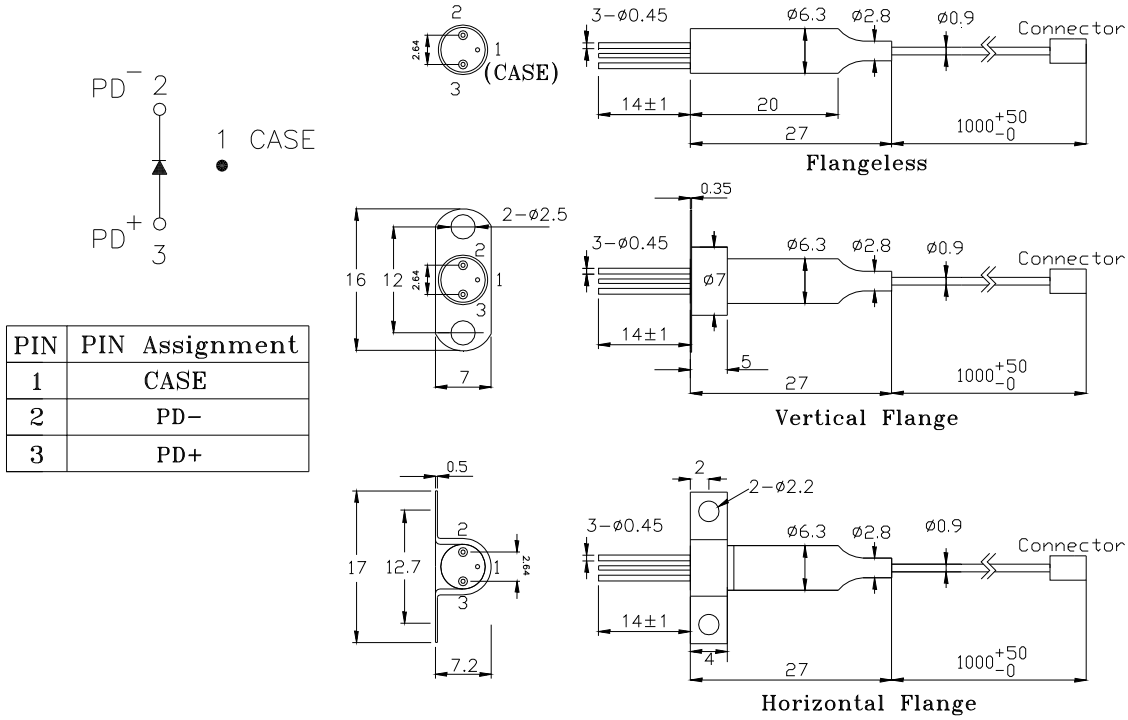
PD-1320 series are designed for coupling a 62.5/125  $\mu\text{m}$  multi-mode fiber with high reliable InGaAs PIN photodiodes. PD-1320 series are specially designed as detector for Datacom and Telecom application.

ELECTRICAL AND OPTICAL CHARACTERISTICS (Tc=25°C)						
Symbol	Parameter	Test Conditions	Min.	Typ.	Max.	Unit
	Detection Range	$\lambda$	1100	-	1650	nm
R	Responsivity	VR=5V, $\lambda=1300\text{nm}$	0.8	0.85	-	A/W
Idark	Dark Current	VR=5V		0.3	0.7	nA
C	Capacitance	VR=5V		0.7	1.0	pF
Tr/Tf	Rise/Fall Time	VR=5V, 10~90%			0.3	ns
BW	Bandwidth	VR=5V	2			GHz

Absolute Maximum Ratings (Tc=25 °C)			
Symbol	Parameter	Ratings	Unit
Po	Input Optical Power	10	mW
VRD	PD Reverse Voltage	20	V
IFD	PD Forward Current	10	mA
Topr	Operating Temperature	-40~+85	°C
Tstg	Storage Temperature	-40~+85	°C

\*\*\*\*\*

## MECHANICAL DIMENSION (mm) and PIN ASSIGNMENT



**Note:** 1. Specifications subject to change without notice.

2. Other PIN assignment is available upon request.

## ORDER INFORMATION

Part No.: P D - 1 3  0 -

Code	Fiber
0	50/125 μm
1	9/125 μm
2	62.5/125 μm

Code	Flange
V	Vertical
H	Horizontal
X	No Flange

Code	Connector Type
S	SC/PC
F	FC/PC
T	ST/PC
X	No Connector
SA	SC/APC
FA	FC/APC

\*\*\*\*\*

## Revision History

Version	Subject	Release Date
1.0	Initial datasheet	2002/1/3

\*\*\*\*\*